

Re-usable hose connections designed for use in all hygienic processing applications



Hygienic Processing Components.....

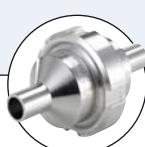
- Guaranteed crevice free
- All medium contact materials traceable
- Excellent sealing properties maintaining sterility
- Suitable for CIP and SIP
- Virtually unlimited flexibility



Type BBS-04
Silicone tube



Type BBS-05
BBS Quick connect



Type BBS-10
Check valve



Type 2103
Diaphragm valve



Type 8221
Conductivity sensor



Type 8650
Process Automation

These hose unions offer optimum flexibility, while the purity of the process is maintained at the highest level.

The appropriate connection is selected depending on the required size of hose. These are available in many designs ranging from standard Clamp, weld end, threaded and flanged. In addition, we also provide for you solutions which are suitable for your specific requirements.

Please note that these unions are designed only for use with our type BBS-04 silicone hose.

Applications

- Biotechnology
- Pharmaceutical
- Chemical industry
- Dairy
- Food
- Cosmetic

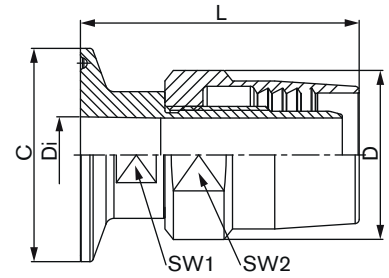
Technical data

| | |
|-----------------------------------|---|
| Available standard sizes | ISO DN06 to DN50 SMS DN04 to DN50 BS-OD DN1/4" to DN2" DIN DN04 to DN50 Customized solution on request |
| Material medium contact | Stainless steel 1.4435 BN2 (316L) Special materials like e.g. Hastelloy 2.4602, Titanium, 1.4539 etc. on request |
| Material medium separated | 1.4305 or equivalent |
| Surface quality | Medium contacted surface < Ra 0,8µm, electro polished, finer surface on request |
| Operating / Burst pressure | See data sheet BBS-04 silicone hose |
| Process temperature | See data sheet BBS-04 silicone hose |
| Ambient temperature | -20 to +80 °C |
| Media | Gases or liquids |
| Applicable Standards | Pipe connection acc. to DIN 11866 ISO-Dimensions Series B (ISO 4200) BS-OD-Dimensions Series C (ASME BPE) DIN-Dimensions Series A (DIN 11850) SMS-Dimension SMS 3008 Clamp connection acc. to DIN 32676 ISO-Dimension Series B BS-OD-Dimension Series C (ASME BPE) DIN-Dimension Series A SMS-Dimension SMS 3008 |
| Certifications | Material 3.1 |

Dimensions [mm]

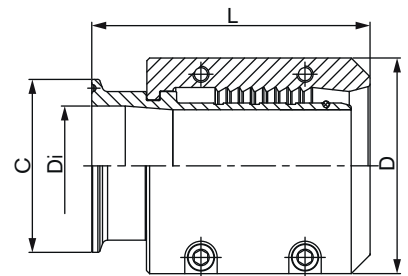
ISO Hose union with Clamp

| Orifice | C [mm] | Di [mm] | L [mm] | D [mm] | SW1 [mm] | SW2 [mm] | Item no. |
|---------|--------|---------|--------|--------|----------|----------|----------------------------------|
| DN06 | 25,00 | 7,00 | 39,50 | 19,80 | 17,00 | 17,00 | BBS-4S-AC.S06.S00.35.0 (742 999) |
| DN08 | 25,00 | 10,30 | 49,00 | 21,70 | 17,00 | 24,00 | BBS-4S-BC.S08.S00.35.0 (742 223) |
| DN10 | 25,00 | 14,00 | 50,00 | 29,70 | 19,00 | 27,00 | BBS-4S-AC.S10.S01.35.0 (742 117) |
| DN15 | 50,50 | 18,10 | 66,00 | 40,00 | 27,00 | 36,00 | BBS-4S-AC.S15.S00.35.0 (742 119) |
| DN20 | 50,50 | 23,70 | 78,50 | 49,50 | 32,00 | 46,00 | BBS-4S-BC.S20.S00.35.0 (742 226) |
| DN25 | 50,50 | 29,70 | 96,00 | 57,00 | 41,00 | 55,00 | BBS-4S-AC.S25.S00.35.0 (742 127) |



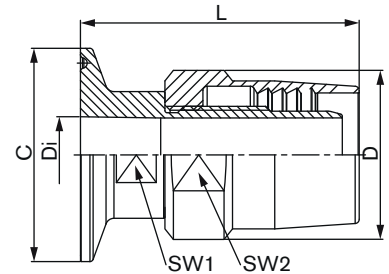
ISO Hose connection with Clamp

| Orifice | C [mm] | Di [mm] | L [mm] | D [mm] | Item no. |
|---------|--------|---------|--------|--------|----------------------------------|
| DN32 | 64,00 | 38,40 | 89,70 | 74,00 | BBS-4S-AC.S32.S01.35.0 (742 135) |
| DN40 | 64,00 | 44,30 | 101,80 | 78,80 | BBS-4S-AC.S40.S01.35.0 (742 139) |
| DN50 | 77,50 | 56,30 | 124,00 | 92,00 | BBS-4S-AC.S50.S00.35.0 (742 140) |



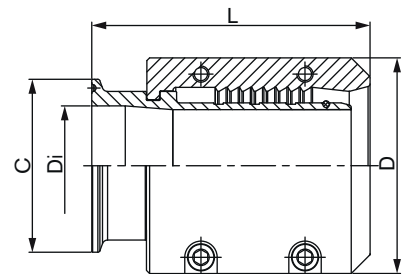
SMS Hose union with Clamp

| Orifice | C [mm] | Di [mm] | L [mm] | D [mm] | SW1 [mm] | SW2 [mm] | Item no. |
|---------|--------|---------|--------|--------|----------|----------|-------------------------------------|
| DN06 | 25,00 | 6,00 | 38,50 | 19,80 | 14,00 | 17,00 | BBS-4S-AC.R06.R00.35.0 (742 105) |
| DN08 | 25,00 | 8,00 | 39,50 | 22,00 | 17,00 | 20,00 | BBS-4S-AC.R08.R00.35.0 (742 106) |
| DN10 | 25,00 | 10,00 | 49,00 | 21,70 | 17,00 | 24,00 | BBS-4S-AC.I10.I00.35.0 (on request) |
| DN15 | 25,00 | 16,00 | 50,00 | 29,70 | 19,00 | 27,00 | BBS-4S-AC.I15.I00.35.0 (742 102) |
| DN20 | 50,50 | 20,00 | 64,00 | 38,60 | 22,00 | 36,00 | BBS-4S-AC.I20.I00.35.0 (on request) |
| DN25 | 50,50 | 22,60 | | | | | BBS-4S-AC.I25.I00.35.0 (on request) |
| DN32 | 50,50 | 29,60 | | | | | BBS-4S-AC.I32.I00.35.0 (on request) |



SMS Hose connection with Clamp

| Orifice | C [mm] | Di [mm] | L [mm] | D [mm] | Item no. |
|---------|--------|---------|------------|--------|-------------------------------------|
| DN40 | 50,50 | 35,60 | on request | | BBS-4S-AC.I40.I00.35.0 (on request) |
| DN50 | 64,00 | 48,60 | on request | | BBS-4S-AC.I50.I00.35.0 (on request) |

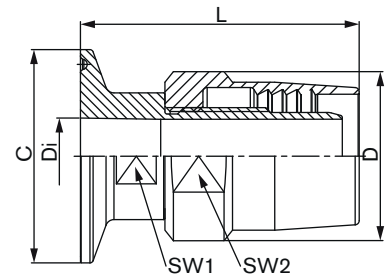


Note: A completely gap-free connection feature can only be given in combination with original BBS silicone hose.

Dimensions [mm]

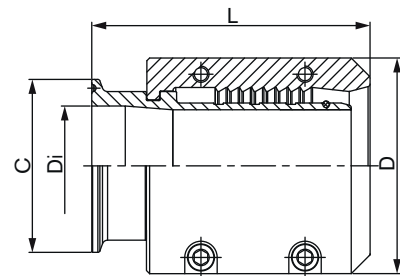
BS-OD Hose union with Clamp

| Orifice | C [mm] | Di [mm] | L [mm] | D [mm] | SW1 [mm] | SW2 [mm] | Item no. |
|----------|--------|---------|--------|--------|----------|----------|----------------------------------|
| DN1/4" | 25,00 | 4,57 | 38,50 | 19,80 | 14,00 | 17,00 | BBS-4S-AA.H02.H00.35.0 (743 031) |
| DN3/8" | 25,00 | 7,75 | 49,00 | 21,70 | 17,00 | 24,00 | BBS-4S-AA.H03.H00.35.0 (741 989) |
| DN1/2" | 25,00 | 9,40 | 50,00 | 29,70 | 19,00 | 27,00 | BBS-4S-AA.H05.H01.35.0 (741 993) |
| DN3/4" | 25,00 | 15,75 | 66,00 | 40,00 | 27,00 | 36,00 | BBS-4S-AA.H07.H00.35.0 (741 995) |
| DN1" | 50,50 | 22,10 | 78,50 | 49,50 | 32,00 | 46,00 | BBS-4S-AA.H10.H01.35.0 (742 001) |
| DN1 1/2" | 50,50 | 34,80 | 89,70 | 74,00 | 41,00 | 60,00 | BBS-4S-AA.H15.H00.35.0 (742 007) |



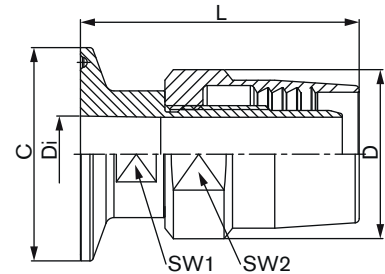
BS-OD Hose connection with Clamp

| Orifice | C [mm] | Di [mm] | L [mm] | D [mm] | Item no. |
|----------|--------|---------|--------|--------|----------------------------------|
| DN2" | 64,00 | 47,50 | 102,00 | 79,80 | BBS-4S-AA.H20.H00.35.0 (742 017) |
| DN2 1/2" | 77,50 | 60,20 | 123,00 | 92,00 | BBS-4S-AA.H25.H01.35.0 (743 239) |



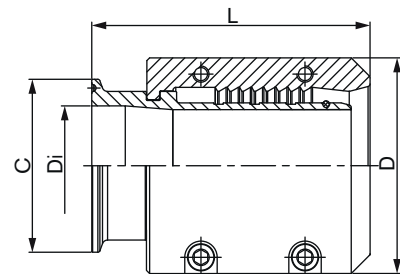
DIN Hose union with Clamp

| Orifice | C [mm] | Di [mm] | L [mm] | D [mm] | SW1 [mm] | SW2 [mm] | Item no. |
|---------|--------|---------|--------|------------|----------|----------|-------------------------------------|
| DN04 | 25,00 | 4,00 | 36,25 | 17,80 | 10,00 | 14,00 | BBS-4S-AC.R04.R00.35.0 (742 104) |
| DN06 | 25,00 | 6,00 | 38,50 | 19,80 | 14,00 | 17,00 | BBS-4S-AC.R06.R00.35.0 (742 105) |
| DN08 | 25,00 | 8,00 | 39,50 | 22,00 | 17,00 | 20,00 | BBS-4S-AC.R08.R00.35.0 (742 106) |
| DN10 | 34,00 | 10,00 | 49,00 | 21,70 | 17,00 | 24,00 | BBS-4S-AC.R10.R00.35.0 (742 107) |
| DN15 | 34,00 | 16,00 | 50,00 | 29,70 | 19,00 | 27,00 | BBS-4S-AC.R15.R01.35.0 (742 108) |
| DN20 | 34,00 | 20,00 | 64,00 | 38,60 | 22,00 | 36,00 | BBS-4S-AC.R20.R00.35.0 (742 109) |
| DN25 | 50,50 | 26,00 | 78,50 | 49,50 | 32,00 | 46,00 | BBS-4S-AC.R25.R01.35.0 (742 111) |
| DN32 | 50,50 | 32,00 | | on request | | | BBS-4S-AC.R32.R00.35.0 (on request) |



DIN Hose connection with Clamp

| Orifice | C [mm] | Di [mm] | L [mm] | D [mm] | Item no. |
|---------|--------|---------|--------|--------|----------------------------------|
| DN40 | 50,50 | 38,00 | 89,70 | 74,00 | BBS-4S-AC.R40.R00.35.0 (742 112) |
| DN50 | 64,00 | 50,00 | 122,50 | 92,00 | BBS-4S-AC.R50.R00.35.0 (742 114) |

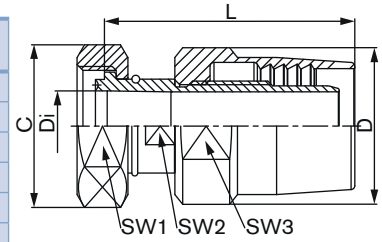


Note: A completely gap-free connection feature can only be given in combination with original BBS silicone hose.

Dimensions [mm]

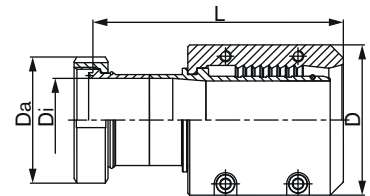
ISO Standard sterile hose union

| Orifice | C | Di | L | D | SW1 | SW2 | SW3 | Item no. | |
|---------|-------|-------|--------|-------|-------|-------|-------|------------------------|-----------|
| | [mm] | [mm] | [mm] | [mm] | [mm] | [mm] | [mm] | | |
| DN06 | 24,50 | 7,00 | 39,25 | 19,80 | 22,00 | 10,00 | 20,00 | BBS-4S-AA.S06.S00.35.0 | (742 052) |
| DN08 | 31,20 | 10,30 | 49,00 | 27,70 | 27,00 | 14,00 | 24,00 | BBS-4S-AA.S08.S01.35.0 | (742 056) |
| DN10 | 36,50 | 14,00 | 52,00 | 29,70 | 32,00 | 19,00 | 27,00 | BBS-4S-AA.S10.S01.35.0 | (742 066) |
| DN15 | 41,60 | 18,10 | 64,00 | 38,60 | 36,00 | 22,00 | 36,00 | BBS-4S-AA.S15.S00.35.0 | (742 072) |
| DN20 | 48,00 | 23,70 | 79,30 | 49,50 | 42,00 | 28,00 | 46,00 | BBS-4S-AA.S20.S01.35.0 | (742 083) |
| DN25 | 52,00 | 29,70 | 121,00 | 57,00 | 46,00 | 32,00 | 55,00 | BBS-4S-AA.S25.S00.35.0 | (742 086) |



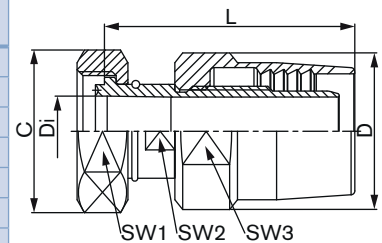
ISO Standard sterile hose connection

| Orifice | C | Di | L | D | Item no. | |
|---------|-------|-------|--------|-------|------------------------|-----------|
| | [mm] | [mm] | [mm] | [mm] | | |
| DN32 | 62,00 | 38,40 | 111,00 | 74,00 | BBS-4S-AA.S32.S00.35.0 | (742 088) |
| DN40 | 67,00 | 44,30 | 132,80 | 79,80 | BBS-4S-AA.S40.S00.35.0 | (742 090) |
| DN50 | 80,00 | 56,30 | 144,00 | 92,00 | BBS-4S-AA.S50.S00.35.0 | (742 091) |



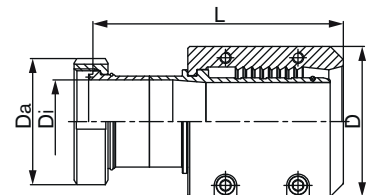
SMS Standard sterile hose union

| Orifice | C | D1 | L | D | SW1 | SW2 | SW3 | Item no. | |
|---------|-------|-------|------------|-------|-------|-------|-------|------------------------|--------------|
| | [mm] | [mm] | [mm] | [mm] | [mm] | [mm] | [mm] | | |
| DN06 | 31,20 | 6,00 | 40,00 | 19,80 | 19,00 | 10,00 | 17,00 | BBS-4S-AA.R06.R00.35.0 | (742 030) |
| DN08 | 36,50 | 8,00 | 42,30 | 22,00 | 22,00 | 11,00 | 20,00 | BBS-4S-AA.R08.R00.35.0 | (742 034) |
| DN10 | 41,60 | 10,00 | 49,00 | 27,70 | 27,00 | 14,00 | 24,00 | BBS-4S-AA.S08.S01.35.0 | (742 056) |
| DN15 | 48,00 | 16,00 | on request | | | | | BBS-4S-AA.I15.I00.35.0 | (on request) |
| DN20 | 52,00 | 20,00 | 65,00 | 38,60 | 42,00 | 22,00 | 36,00 | BBS-4S-AA.I20.I00.35.0 | (on request) |
| DN25 | 62,00 | 22,60 | on request | | | | | BBS-4S-AA.I25.I00.35.0 | (on request) |
| DN32 | 67,00 | 29,60 | on request | | | | | BBS-4S-AA.I32.I00.35.0 | (on request) |



SMS Standard sterile hose connection

| Orifice | C | D1 | L | D | Item no. | |
|---------|-------|-------|------------|------|------------------------|--------------|
| | [mm] | [mm] | [mm] | [mm] | | |
| DN40 | 77,50 | 35,60 | on request | | BBS-4S-AA.I40.I00.35.0 | (on request) |
| DN50 | 80,00 | 48,60 | on request | | BBS-4S-AA.I50.I00.35.0 | (on request) |

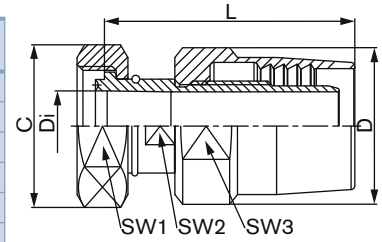


Note: A completely gap-free connection feature can only be given in combination with original BBS silicone hose.

Dimensions [mm]

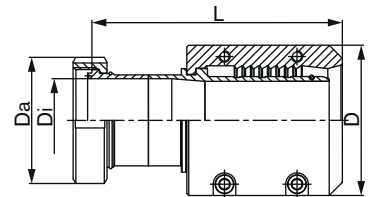
BS-OD standard sterile hose union

| Orifice | C [mm] | Di [mm] | L [mm] | D [mm] | SW1 [mm] | SW2 [mm] | SW3 [mm] | Item no. |
|----------|--------|---------|--------|--------|----------|----------|----------|----------------------------------|
| DN1/4" | 21,90 | 4,57 | 42,30 | 22,00 | 22,00 | 11,00 | 17,00 | BBS-4S-AA.T02.T00.35.0 (742 092) |
| DN3/8" | 21,90 | 7,70 | 49,00 | 27,70 | 27,00 | 14,00 | 24,00 | BBS-4S-AA.T03.T00.35.0 (742 093) |
| DN1/2" | 24,50 | 9,40 | 52,00 | 29,70 | 32,00 | 19,00 | 27,00 | BBS-4S-AA.T05.T00.35.0 (742 094) |
| DN3/4" | 31,20 | 15,75 | 65,00 | 38,60 | 42,00 | 22,00 | 36,00 | BBS-4S-AA.T07.T00.35.0 (742 095) |
| DN1" | 36,50 | 22,10 | 79,30 | 49,50 | 42,00 | 28,00 | 46,00 | BBS-4S-AA.T10.T00.35.0 (742 096) |
| DN1 1/2" | 48,30 | 34,80 | 111,00 | 74,00 | 56,00 | 41,00 | 60,00 | BBS-4S-AA.T15.T00.35.0 (742 097) |



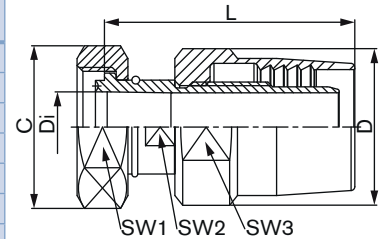
BS-OD Standard sterile hose connection

| Orifice | C [mm] | Di [mm] | L [mm] | D [mm] | Item no. |
|---------|--------|---------|------------|--------|-------------------------------------|
| DN2" | 52,00 | 47,50 | on request | | BBS-4S-AA.T20.T00.35.0 (on request) |



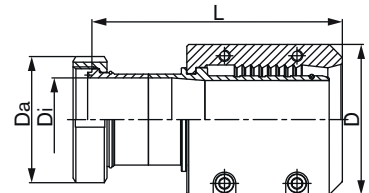
DIN Standard hose union

| Orifice | C [mm] | Di [mm] | L [mm] | D [mm] | SW1 [mm] | SW2 [mm] | SW3 [mm] | Item no. |
|---------|--------|---------|------------|--------|----------|----------|----------|----------------------------------|
| DN04 | 21,90 | 4,00 | 40,00 | 17,80 | 19,00 | 8,00 | 14,00 | BBS-4S-AA.R04.R00.35.0 (742 027) |
| DN06 | 21,90 | 6,00 | 40,00 | 19,80 | 19,00 | 10,00 | 17,00 | BBS-4S-AA.R06.R00.35.0 (742 030) |
| DN08 | 24,50 | 8,00 | 42,30 | 22,00 | 22,00 | 11,00 | 20,00 | BBS-4S-AA.R08.R00.35.0 (742 034) |
| DN10 | 31,20 | 10,00 | 49,00 | 27,70 | 27,00 | 14,00 | 24,00 | BBS-4S-AA.S08.S01.35.0 (742 056) |
| DN15 | 36,50 | 16,00 | on request | | | | | BBS-4S-AA.R15.R00.35.0 (742 040) |
| DN20 | 48,30 | 20,00 | 65,00 | 38,60 | 42,00 | 22,00 | 36,00 | BBS-4S-AA.R20.R00.35.0 (742 042) |
| DN25 | 52,00 | 26,00 | on request | | | | | BBS-4S-AA.R25.R00.35.0 (742 043) |
| DN32 | 62,00 | 32,00 | on request | | | | | BBS-4S-AA.R32.R00.35.0 (742 046) |



DIN Standard hose connection

| Orifice | C [mm] | Di [mm] | L [mm] | D [mm] | Item no. |
|---------|--------|---------|------------|--------|----------------------------------|
| DN40 | 67,00 | 38,00 | on request | | BBS-4S-AA.R40.R00.35.0 (742 048) |
| DN50 | 80,00 | 50,00 | on request | | BBS-4S-AA.R50.R00.35.0 (742 050) |

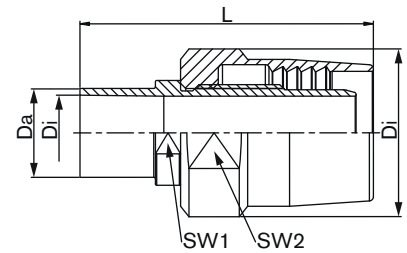


Note: A completely gap-free connection feature can only be given in combination with original BBS silicone hose.

Dimensions [mm]

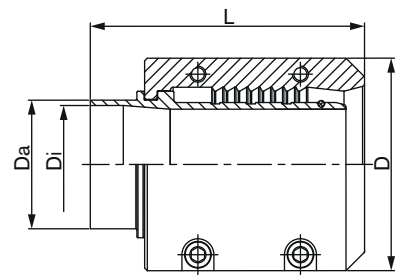
ISO Hose union with weld end

| Orifice | Da [mm] | Di [mm] | L [mm] | D [mm] | SW1 [mm] | SW2 [mm] | Item no. |
|---------|---------|---------|------------|--------|----------|----------|-------------------------------------|
| DN06 | 10,20 | 7,00 | on request | | | | BBS-4S-DA.S06.S00.35.0 (on request) |
| DN08 | 13,50 | 10,30 | 54,00 | 27,70 | 14,00 | 24,00 | BBS-4S-DA.S08.S01.35.0 (742 302) |
| DN10 | 17,20 | 14,00 | 61,50 | 29,70 | 19,00 | 27,00 | BBS-4S-DA.S10.S01.35.0 (742 304) |
| DN15 | 21,30 | 18,10 | 70,00 | 38,60 | 22,00 | 36,00 | BBS-4S-DA.S15.S00.35.0 (742 306) |
| DN20 | 26,90 | 23,70 | 84,00 | 49,50 | 32,00 | 46,00 | BBS-4S-DA.S20.S01.35.0 (742 308) |
| DN25 | 33,70 | 29,70 | 96,00 | 57,00 | 41,00 | 55,00 | BBS-4S-DA.S25.S00.35.0 (742 309) |



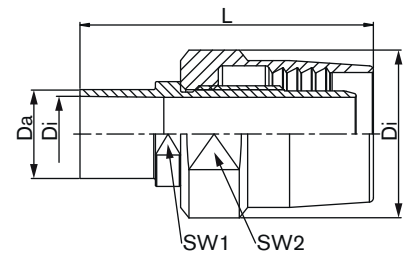
ISO Hose connection with weld end

| Orifice | Da [mm] | Di [mm] | L [mm] | D [mm] | Item no. |
|---------|---------|---------|--------|--------|----------------------------------|
| DN32 | 42,40 | 38,40 | 85,60 | 74,00 | BBS-4S-DA.S32.S00.35.0 (742 310) |
| DN40 | 48,30 | 44,30 | 102,80 | 79,80 | BBS-4S-DA.S40.S00.35.0 (742 311) |
| DN50 | 60,30 | 56,30 | 114,00 | 92,00 | BBS-4S-DA.S50.S00.35.0 (742 312) |



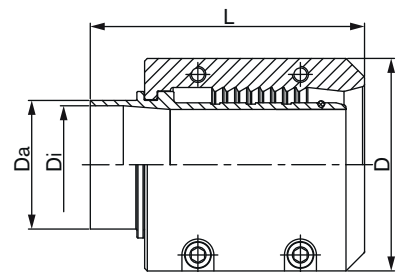
SMS Hose union with weld end

| Orifice | Da [mm] | Di [mm] | L [mm] | D [mm] | SW1 [mm] | SW2 [mm] | Item no. |
|---------|---------|---------|------------|--------|----------|----------|-------------------------------------|
| DN06 | 8,00 | 6,00 | 48,00 | 19,80 | 13,00 | 17,00 | BBS-4S-DA.R06.R00.35.0 (742 289) |
| DN08 | 10,00 | 8,00 | 50,00 | 22,00 | 13,00 | 20,00 | BBS-4S-DA.R08.R00.35.0 (742 290) |
| DN10 | 13,00 | 10,00 | 54,00 | 27,70 | 15,00 | 24,00 | BBS-4S-DA.R10.R01.35.0 (742 292) |
| DN15 | 18,00 | 16,00 | 61,50 | 29,70 | 21,00 | 27,00 | BBS-4S-DA.I15.I00.35.0 (742 280) |
| DN20 | 22,00 | 20,00 | 73,00 | 38,80 | 24,00 | 36,00 | BBS-4S-DA.I20.I00.35.0 (on request) |
| DN25 | 25,00 | 22,60 | 70,00 | 38,60 | 22,00 | 36,00 | BBS-4S-DA.I25.I01.35.0 (742 285) |
| DN32 | 32,00 | 29,60 | on request | | | | BBS-4S-DA.I32.I00.35.0 (on request) |



SMS Hose connection with weld end

| Orifice | Da [mm] | Di [mm] | L [mm] | D [mm] | Item no. |
|---------|---------|---------|------------|--------|----------------------------------|
| DN40 | 38,00 | 35,60 | 96,00 | 57,00 | BBS-4S-DA.I40.I00.35.0 (742 286) |
| DN50 | 51,00 | 48,60 | on request | | BBS-4S-DA.I50.I00.35.0 (742 287) |

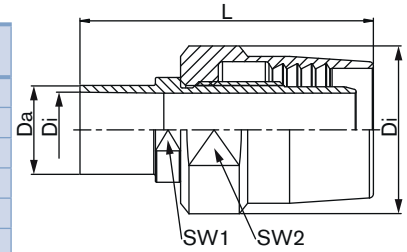


Note: A completely gap-free connection feature can only be given in combination with original BBS silicone hose.

Dimensions [mm]

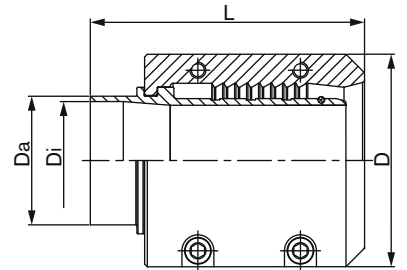
BS-OD Hose union with weld end

| Orifice | Da [mm] | Di [mm] | L [mm] | D [mm] | SW1 [mm] | SW2 [mm] | Item no. | |
|----------|---------|---------|--------|--------|----------|----------|------------------------|-----------|
| DN1/4" | 6,35 | 4,57 | 42,30 | 22,00 | 22,00 | 17,00 | BBS-4S-DA.T02.T00.35.0 | (742 313) |
| DN3/8" | 9,53 | 7,75 | 54,00 | 27,70 | 14,00 | 24,00 | BBS-4S-DA.T03.T00.35.0 | (742 314) |
| DN1/2" | 12,70 | 9,40 | 64,00 | 29,70 | 32,00 | 27,00 | BBS-4S-DA.T05.T00.35.0 | (742 315) |
| DN3/4" | 19,05 | 15,75 | 78,90 | 38,60 | 22,00 | 36,00 | BBS-4S-DA.T07.T00.35.0 | (742 316) |
| DN1" | 25,40 | 22,10 | 95,00 | 49,50 | 32,00 | 46,00 | BBS-4S-DA.T10.T00.35.0 | (742 317) |
| DN1 1/2" | 38,10 | 34,80 | 100,80 | 96,00 | 41,00 | 60,00 | BBS-4S-DA.T15.T00.35.0 | (742 318) |



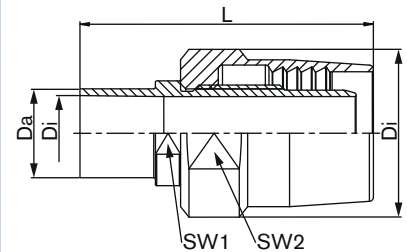
BS-OD Hose connection with weld end

| Orifice | Da [mm] | Di [mm] | L [mm] | D [mm] | Item no. | |
|---------|---------|---------|------------|--------|------------------------|-----------|
| DN2" | 50,80 | 47,50 | on request | | BBS-4S-DA.T20.T00.35.0 | (742 319) |



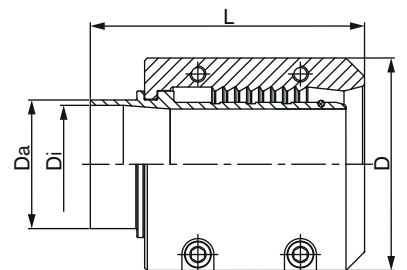
DIN Hose union with weld end

| Orifice | Da [mm] | Di [mm] | L [mm] | D [mm] | SW1 [mm] | SW2 [mm] | Item no. | |
|---------|---------|---------|------------|--------|----------|----------|--------------------------|--------------|
| DN04 | 6,00 | 4,00 | 40,00 | 17,80 | 12,00 | 14,00 | BBS-4S-DA.R04.R00.35.0 | (742 288) |
| DN06 | 8,00 | 6,00 | 48,00 | 19,80 | 13,00 | 17,00 | BBS-4S-DA.R06.R00.35.0 | (742 289) |
| DN08 | 10,00 | 8,00 | 50,00 | 22,00 | 13,00 | 20,00 | BBS-4S-DA.R08.R00.35.0 | (742 290) |
| DN10 | 12,00 | 10,00 | 54,00 | 27,70 | 15,00 | 24,00 | BBS-4S-DA.R10.R01.35.0 | (742 292) |
| DN10 | 13,00 | 10,00 | 54,00 | 27,70 | 15,00 | 24,00 | BBS-4S-DA.R10.R01.35.0-1 | (on request) |
| DN15 | 19,00 | 16,00 | 61,50 | 29,70 | 21,00 | 27,00 | BBS-4S-DA.R15.R01.35.0 | (742 295) |
| DN20 | 23,00 | 20,00 | 73,00 | 38,60 | 24,00 | 36,00 | BBS-4S-DA.R20.R00.35.0 | (742 296) |
| DN25 | 29,00 | 26,00 | on request | | | | BBS-4S-DA.R25.R00.35.0 | (on request) |
| DN32 | 35,00 | 32,00 | 96,00 | 57,00 | 41,00 | 55,00 | BBS-4S-DA.R32.R00.35.0 | (742 298) |



DIN Hose connection with weld end

| Orifice | Da [mm] | Di [mm] | L [mm] | D [mm] | Item no. | |
|---------|---------|---------|------------|--------|------------------------|-----------|
| DN40 | 41,00 | 38,00 | on request | | BBS-4S-DA.R40.R00.35.0 | (742 299) |
| DN50 | 53,00 | 50,00 | on request | | BBS-4S-DA.R50.R00.35.0 | (742 300) |

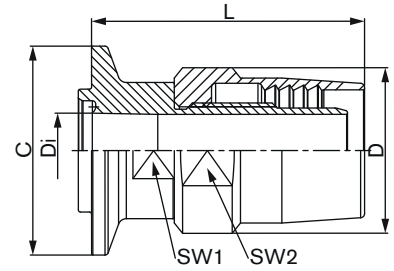


Note: A completely gap-free connection feature can only be given in combination with original BBS silicone hose.

Dimensions [mm]

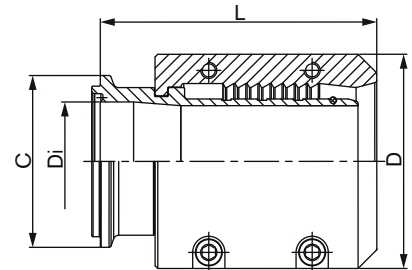
ISO Hose union with quick connect male

| Orifice | C [mm] | Di [mm] | L [mm] | D [mm] | SW1 [mm] | SW2 [mm] | Item no. |
|---------|--------|---------|------------|--------|----------|----------|-------------------------------------|
| DN06 | 25,00 | 7,00 | on request | | | | BBS-4S-NA.G06.G00.35.0 (on request) |
| DN08 | 25,00 | 10,30 | 52,00 | 27,70 | 17,00 | 24,00 | BBS-4S-NA.G08.G01.35.0 (731 471) |
| DN10 | 50,50 | 14,00 | 52,00 | 29,70 | 19,00 | 27,00 | BBS-4S-NA.G10.G01.35.0 (742 534) |
| DN15 | 50,50 | 18,10 | 66,00 | 38,60 | 27,00 | 36,00 | BBS-4S-NA.G15.G00.35.0 (742 536) |
| DN20 | 50,50 | 23,70 | 80,50 | 50,00 | 27,00 | 46,00 | BBS-4S-NA.G20.G00.35.0 (on request) |
| DN25 | 50,50 | 29,70 | on request | | | | BBS-4S-NA.G25.G00.35.0 (on request) |



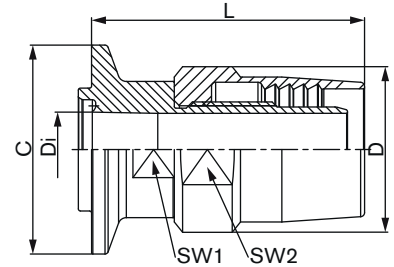
ISO Hose connection with quick connect male

| Orifice | C [mm] | Di [mm] | L [mm] | D [mm] | Item no. |
|---------|--------|---------|--------|--------|-------------------------------------|
| DN32 | 64,00 | 38,40 | 110,00 | 90,00 | BBS-4S-NA.G32.G01.35.0 (731 489) |
| DN40 | 64,00 | 44,30 | 130,00 | 79,80 | BBS-4S-NA.G40.G00.35.0 (731 495) |
| DN50 | 77,50 | 56,30 | 146,60 | 92,00 | BBS-4S-NA.G50.G01.35.0 (on request) |



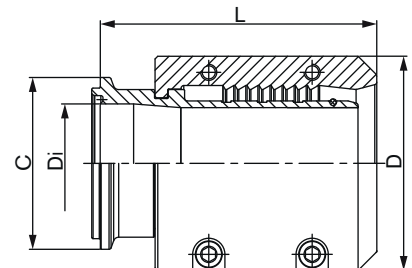
SMS Hose union with quick connect male

| Orifice | C [mm] | Di [mm] | L [mm] | D [mm] | SW1 [mm] | SW2 [mm] | Item no. |
|---------|--------|---------|------------|--------|----------|----------|-------------------------------------|
| DN06 | 25,00 | 6,00 | 38,50 | 19,80 | 14,00 | 17,00 | BBS-4S-NA.P06.P00.35.0 (731 526) |
| DN08 | 25,00 | 8,00 | 39,50 | 22,00 | 14,00 | 20,00 | BBS-4S-NA.P08.P00.35.0 (731 528) |
| DN10 | 25,00 | 10,00 | 48,80 | 27,70 | 17,00 | 24,00 | BBS-4S-NA.P10.P01.35.0 (731 534) |
| DN15 | 50,50 | 16,00 | on request | | | | BBS-4S-NA.I15.I00.35.0 (on request) |
| DN20 | 50,50 | 20,00 | 63,80 | 38,60 | 22,00 | 36,00 | BBS-4S-NA.I20.I00.35.0 (on request) |
| DN25 | 50,50 | 22,60 | on request | | | | BBS-4S-NA.I25.I00.35.0 (on request) |
| DN32 | 64,00 | 29,60 | on request | | | | BBS-4S-NA.I32.I00.35.0 (on request) |



SMS Hose connection with quick connect male

| Orifice | C [mm] | Di [mm] | L [mm] | D [mm] | Item no. |
|---------|--------|---------|------------|--------|-------------------------------------|
| DN40 | 64,00 | 35,60 | on request | | BBS-4S-NA.I40.I00.35.0 (731 520) |
| DN50 | 77,50 | 48,60 | on request | | BBS-4S-NA.I50.I00.35.0 (on request) |

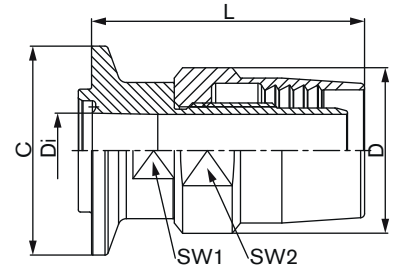


Note: A completely gap-free connection feature can only be given in combination with original BBS silicone hose.

Dimensions [mm]

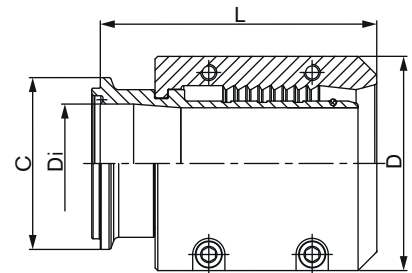
BS-OD Hose union with quick connect male

| Orifice | C [mm] | Di [mm] | L [mm] | D [mm] | SW1 [mm] | SW2 [mm] | Item no. | |
|----------|--------|---------|------------|--------|----------|----------|------------------------|--------------|
| DN1/4" | 25,00 | 4,57 | 38,40 | 19,80 | 14,00 | 17,00 | BBS-4S-NA.H02.H00.35.0 | (731 501) |
| DN3/8" | 25,00 | 7,75 | on request | | | | BBS-4S-NA.H03.H00.35.0 | (on request) |
| DN1/2" | 25,00 | 9,40 | 50,50 | 29,70 | 19,00 | 27,00 | BBS-4S-NA.H05.H00.35.0 | (731 503) |
| DN3/4" | 50,50 | 15,75 | 66,00 | 40,00 | 27,00 | 36,00 | BBS-4S-NA.H07.H00.35.0 | (731 505) |
| DN1" | 50,50 | 22,10 | 80,50 | 49,50 | 32,00 | 46,00 | BBS-4S-NA.H10.H01.35.0 | (731 510) |
| DN1 1/2" | 50,50 | 34,80 | 89,70 | 74,00 | 41,00 | 60,00 | BBS-4S-NA.H15.H00.35.0 | (731 512) |



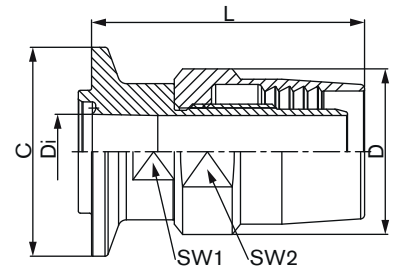
BS-OD Hose connection with quick connect male

| Orifice | C [mm] | Di [mm] | L [mm] | D [mm] | Item no. | |
|---------|--------|---------|------------|--------|------------------------|-----------|
| DN2" | 64,00 | 47,50 | on request | | BBS-4S-NA.H20.H00.35.0 | (731 514) |



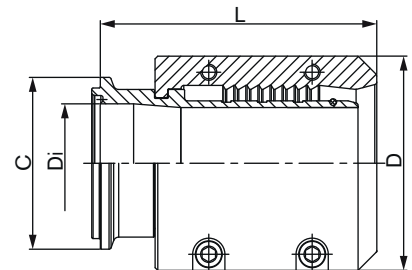
DIN Hose union with quick connect male

| Orifice | C [mm] | Di [mm] | L [mm] | D [mm] | SW1 [mm] | SW2 [mm] | Item no. | |
|---------|--------|---------|------------|--------|----------|----------|------------------------|--------------|
| DN04 | 25,00 | 4,00 | 36,25 | 17,80 | 10,00 | 14,00 | BBS-4S-NA.P04.P00.35.0 | (731 524) |
| DN06 | 25,00 | 6,00 | 38,50 | 19,80 | 14,00 | 17,00 | BBS-4S-NA.P06.P00.35.0 | (731 526) |
| DN08 | 25,00 | 8,00 | 39,50 | 22,00 | 11,00 | 20,00 | BBS-4S-NA.P08.P00.35.0 | (731 528) |
| DN10 | 25,00 | 10,00 | 48,80 | 27,70 | 17,00 | 24,00 | BBS-4S-NA.P10.P01.35.0 | (731 534) |
| DN15 | 50,50 | 16,00 | on request | | | | BBS-4S-NA.P15.P00.35.0 | (on request) |
| DN20 | 50,50 | 20,00 | 63,80 | 38,60 | 22,00 | 36,00 | BBS-4S-NA.P20.P00.35.0 | (731 535) |
| DN25 | 50,50 | 26,00 | on request | | | | BBS-4S-NA.P25.P00.35.0 | (731 537) |
| DN32 | 50,50 | 32,00 | on request | | | | BBS-4S-NA.P32.P00.35.0 | (on request) |



DIN Hose connection with quick connect male

| Orifice | C [mm] | Di [mm] | L [mm] | D [mm] | Item no. | |
|---------|--------|---------|------------|--------|------------------------|-----------|
| DN40 | 50,50 | 38,00 | 89,70 | 74,00 | BBS-4S-NA.P40.P00.35.0 | (731 539) |
| DN50 | 64,00 | 50,00 | on request | | BBS-4S-NA.P50.P00.35.0 | (731 541) |

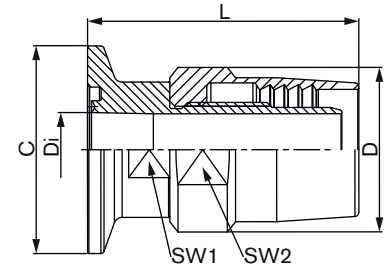


Note: A completely gap-free connection feature can only be given in combination with original BBS silicone hose.

Dimensions [mm]

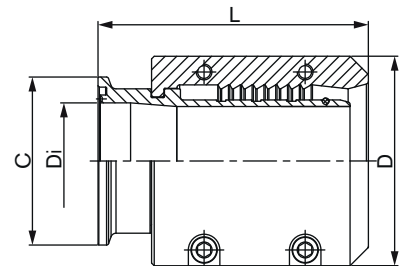
ISO Hose union with quick connect female

| Orifice | C [mm] | Di [mm] | L [mm] | D [mm] | SW1 [mm] | SW2 [mm] | Item no. |
|---------|--------|---------|------------|--------|----------|----------|-------------------------------------|
| DN06 | 25,00 | 7,00 | on request | | | | BBS-4S-NB.G06.G00.35.0 (on request) |
| DN08 | 25,00 | 10,30 | 48,90 | 27,70 | 17,00 | 24,00 | BBS-4S-NB.G08.G01.35.0 (742 543) |
| DN10 | 50,50 | 14,00 | 52,00 | 29,70 | 19,00 | 27,00 | BBS-4S-NB.G10.G01.35.0 (742 549) |
| DN15 | 50,50 | 18,10 | 66,00 | 38,60 | 27,00 | 36,00 | BBS-4S-NB.G15.G00.35.0 (742 551) |
| DN20 | 50,50 | 23,70 | on request | | | | BBS-4S-NB.G20.G01.35.0 (on request) |
| DN25 | 50,50 | 29,70 | 97,00 | 57,00 | 41,00 | 55,00 | BBS-4S-NB.G25.G00.35.0 (742 554) |



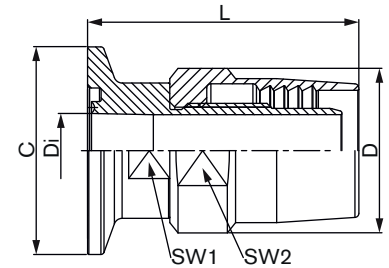
ISO Hose connection with quick connect female

| Orifice | C [mm] | Di [mm] | L [mm] | D [mm] | Item no. |
|---------|--------|---------|------------|--------|----------------------------------|
| DN32 | 64,00 | 38,40 | 110,00 | 74,00 | BBS-4S-NB.G32.G01.35.0 (742 558) |
| DN40 | 64,00 | 44,30 | on request | | BBS-4S-NB.G40.G01.35.0 (742 561) |
| DN50 | 77,50 | 56,30 | on request | | BBS-4S-NB.G50.G00.35.0 (742 563) |



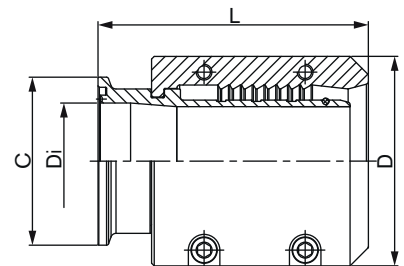
SMS Hose union with quick connect female

| Orifice | C [mm] | Di [mm] | L [mm] | D [mm] | SW1 [mm] | SW2 [mm] | Item no. |
|---------|--------|---------|------------|--------|----------|----------|-------------------------------------|
| DN06 | 25,00 | 6,00 | 38,50 | 19,80 | 14,00 | 17,00 | BBS-4S-NB.P06.P00.35.0 (742 575) |
| DN08 | 25,00 | 8,00 | 39,50 | 22,00 | 17,00 | 20,00 | BBS-4S-NB.P08.P00.35.0 (742 576) |
| DN10 | 25,00 | 10,00 | 48,80 | 27,70 | 17,00 | 24,00 | BBS-4S-NB.P10.P00.35.0 (742 578) |
| DN15 | 50,50 | 16,00 | on request | | | | BBS-4S-NB.I15.I00.35.0 (on request) |
| DN20 | 50,50 | 20,00 | 63,80 | 38,60 | 22,00 | 36,00 | BBS-4S-NB.I20.I00.35.0 (on request) |
| DN25 | 50,50 | 22,60 | on request | | | | BBS-4S-NB.I25.I00.35.0 (on request) |
| DN32 | 64,00 | 29,60 | on request | | | | BBS-4S-NB.I32.I00.35.0 (on request) |



SMS Hose connection with quick connect female

| Orifice | C [mm] | Di [mm] | L [mm] | D [mm] | Item no. |
|---------|--------|---------|------------|--------|----------------------------------|
| DN40 | 64,00 | 35,60 | on request | | BBS-4S-NB.I40.I00.35.0 (742 572) |
| DN50 | 77,50 | 48,60 | on request | | BBS-4S-NB.I50.I00.35.0 (742 573) |

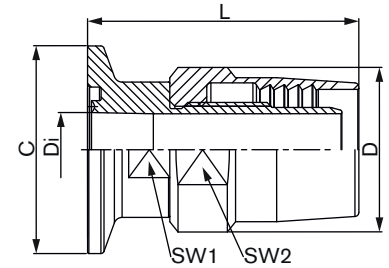


Note: A completely gap-free connection feature can only be given in combination with original BBS silicone hose.

Dimensions [mm]

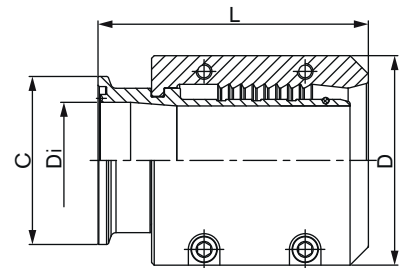
BS-OD Hose union with quick connect female

| Orifice | C [mm] | Di [mm] | L [mm] | D [mm] | SW1 [mm] | SW2 [mm] | Item no. | |
|----------|--------|---------|------------|--------|----------|----------|------------------------|--------------|
| DN1/4" | 25,00 | 4,57 | 38,40 | 19,80 | 14,00 | 17,00 | BBS-4S-NB.H02.H00.35.0 | (742 564) |
| DN3/8" | 25,00 | 7,75 | on request | | | | BBS-4S-NB.H03.H00.35.0 | (on request) |
| DN1/2" | 25,00 | 9,40 | 52,00 | 29,70 | 17,00 | 27,00 | BBS-4S-NB.H05.H01.35.0 | (742 566) |
| DN3/4" | 25,00 | 15,75 | 65,80 | 38,60 | 22,00 | 36,00 | BBS-4S-NB.H07.H00.35.0 | (742 567) |
| DN1" | 50,50 | 22,10 | 77,50 | 49,50 | 32,00 | 46,00 | BBS-4S-NB.H10.H00.35.0 | (742 569) |
| DN1 1/2" | 50,50 | 34,80 | 89,70 | 74,00 | 41,00 | 60,00 | BBS-4S-NB.H15.H00.35.0 | (742 570) |



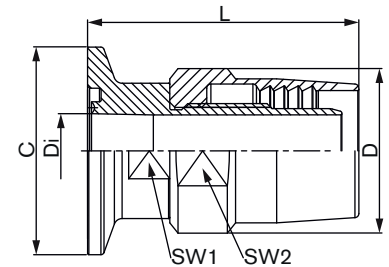
BS-OD Hose connection with quick connect female

| Orifice | C [mm] | Di [mm] | L [mm] | D [mm] | Item no. | |
|---------|--------|---------|------------|--------|------------------------|-----------|
| DN2" | 64,00 | 47,50 | on request | | BBS-4S-NB.H20.H00.35.0 | (742 571) |



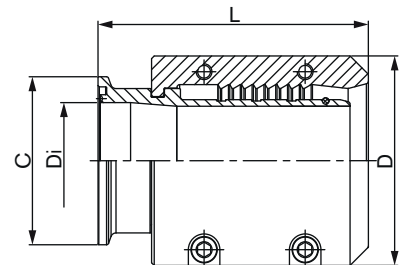
DIN Hose union with quick connect female

| Orifice | C [mm] | Di [mm] | L [mm] | D [mm] | SW1 [mm] | SW2 [mm] | Item no. | |
|---------|--------|---------|------------|--------|----------|----------|------------------------|--------------|
| DN04 | 25,00 | 4,00 | 40,70 | 17,80 | 10,00 | 14,00 | BBS-4S-NB.P04.P00.35.0 | (742 574) |
| DN06 | 25,00 | 6,00 | 38,50 | 19,80 | 14,00 | 17,00 | BBS-4S-NB.P06.P00.35.0 | (742 575) |
| DN08 | 25,00 | 8,00 | 39,50 | 22,00 | 17,00 | 20,00 | BBS-4S-NB.P08.P00.35.0 | (742 576) |
| DN10 | 25,00 | 10,00 | 48,80 | 27,70 | 17,00 | 24,00 | BBS-4S-NB.P10.P00.35.0 | (742 578) |
| DN15 | 50,50 | 16,00 | on request | | | | BBS-4S-NB.P15.P00.35.0 | (on request) |
| DN20 | 50,50 | 20,00 | 63,80 | 38,60 | 22,00 | 36,00 | BBS-4S-NB.P20.P00.35.0 | (742 580) |
| DN25 | 50,50 | 26,00 | on request | | | | BBS-4S-NB.P25.P00.35.0 | (742 581) |
| DN32 | 50,50 | 32,00 | on request | | | | BBS-4S-NB.P32.P00.35.0 | (on request) |



DIN Hose connection with quick connect female

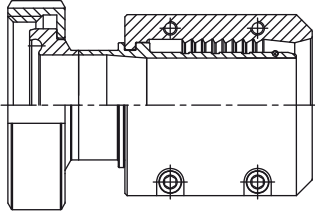
| Orifice | C [mm] | Di [mm] | L [mm] | D [mm] | Item no. | |
|---------|--------|---------|------------|--------|------------------------|-----------|
| DN40 | 50,50 | 38,00 | 89,70 | 74,00 | BBS-4S-NB.P40.P00.35.0 | (742 582) |
| DN50 | 64,00 | 50,00 | on request | | BBS-4S-NB.P50.P00.35.0 | (742 583) |



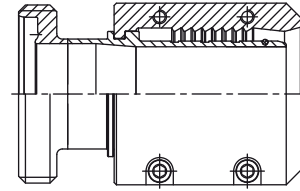
Note: A completely gap-free connection feature can only be given in combination with original BBS silicone hose.

Following versions available on request

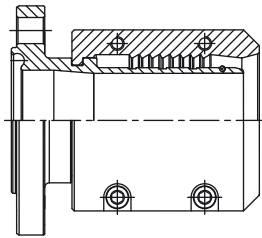
**Hose connection acc. to
DIN 11864-1 (Male ferrule)**



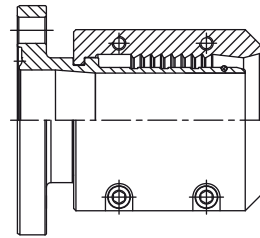
**Hose connection acc. to
DIN 11864-1 (Female ferrule threaded)**



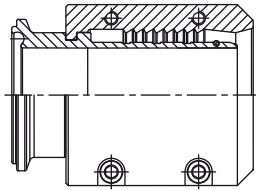
**Hose connection acc. to
DIN 11864-2 Flange (Female)**



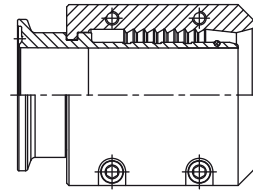
**Hose connection acc. to
DIN 11864-2 Flange (Male)**



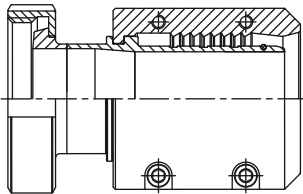
**Hose connection acc. to
DIN 11864-3 Flange (Female)**



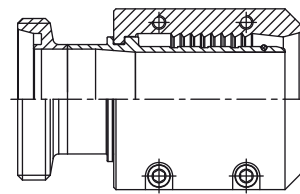
**Hose connection acc. to
DIN 11864-3 (Male ferrule)**



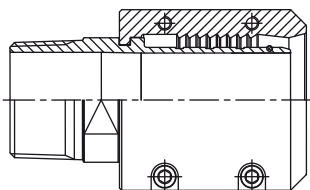
**Hose connection acc. to
DIN 11851 (Male ferrule)**



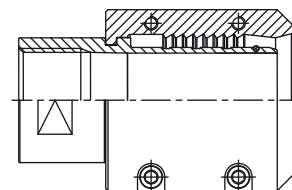
**Hose connection acc. to
DIN 11851 (Female ferrule threaded)**



**Hose connection with external thread
(Gas pipe thread conical acc. to ISO 7-1)**



**Hose connection with internal thread
(Gas pipe thread cyl. acc. to ISO 228-1)**



Reductions and increments available on request.

You can fill out the fields directly in the PDF file before printing out the form.

Hose set Type 4S – Request for quotation

▶ Please fill out and send to your nearest Bürkert facility* with your inquiry or order

| | |
|---------------|----------------|
| Company | Contact person |
| Customer no. | Department |
| Address | Tel./Fax |
| Postcode/Town | E-mail |

Quantity Required delivery date

Specification key for silicone hose

Example

TCS BS 11/2" 316L MD 08 1875 J TCS BS 3

Specification key

Please make a choice

| | | | | | | | | | | |
|----------------------|----------------------|----------------------|----------------------|----------------------|----------------------|----------------------|----------------------|----------------------|----------------------|----------------------|
| A | B | C | D | E | F | G | H | I | K | L |
| <input type="text"/> | <input type="text"/> | <input type="text"/> | <input type="text"/> | <input type="text"/> | <input type="text"/> | <input type="text"/> | <input type="text"/> | <input type="text"/> | <input type="text"/> | <input type="text"/> |

| (A) Connection type 1 | |
|-----------------------|-----------------------------|
| TCS | Clamp standard |
| SVS | Sterile connection standard |
| QCM | Quick Connect Male |
| QCF | Quick Connect Female |
| ACM | Aseptic Clamp 11864 Male |
| ACF | Aseptic Clamp 11864 Female |
| SWO | Weld end Orbital |

| (E) Hose Type | |
|---------------|----------------------------|
| CL | Without reinforcement |
| MD | Glass silk reinforced |
| MA | Aramid reinforced |
| MB | Double aramid reinforced |
| MR | Stainless steel reinforced |

| (I) Connection type 2 | |
|-----------------------|----------------------------|
| TCS | Clamp standard |
| SVS | Steril connection standard |
| QCM | Quick Connect Male |
| QCF | Quick Connect Female |
| ACM | Aseptic Clamp 11864 Male |
| ACF | Aseptic Clamp 11864 Female |
| SWO | Weld end Orbital |

| (B) Connection size 1 | |
|-----------------------|---------------|
| ISO | ISO Dimension |
| DIN | DIN Dimension |
| BS | BS-OD |
| SMS | SMS Dimension |

| (F) Wetted Parts Surface | |
|--------------------------|------------|
| 08 | Ra < 0,8um |
| 06 | Ra < 0,6um |
| 04 | Ra < 0,4um |
| 02 | Ra < 0,2um |

| (K) Connection size 2 | |
|-----------------------|---------------|
| ISO | ISO Dimension |
| DIN | DIN Dimension |
| BS | BS-OD |
| SMS | SMS Dimension |

| (C) Orifice | |
|-------------|------------------|
| XXXX | Nominal diameter |

| (G) Hose size (mm) | |
|--------------------|-----------------------------|
| XXXX | please fill in desired size |

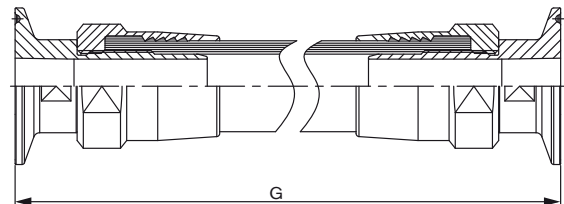
| (L) Certificate | |
|-----------------|----------------------------------|
| 0 | none |
| 1 | Material 3.1 |
| 2 | Hose FDA/USP |
| 3 | 3.1 & FDA/USP |
| 4 | Pressure test & 3.1, FDA/USP |
| 5 | Ra, pressure test & 3.1, FDA/USP |

| (D) Media contact material | |
|----------------------------|--------|
| BN2 | 1.4435 |
| 316L | 1.4404 |
| DIN no. | other |

| (H) Label (insert required text into comment box) | |
|---|------------------|
| J | with hose TAG |
| N | without hose TAG |

Note: For other requests please contact your nearest Bürkert facility.

| Comment / sketch |
|------------------|
| |
| |
| |
| |
| |
| |



To find your nearest Bürkert facility, click on the orange box → www.burkert.com

In case of special application conditions, please consult for advice.

Subject to alterations
© Christian Bürkert GmbH & Co. KG

1202/2_EU-en_00895166