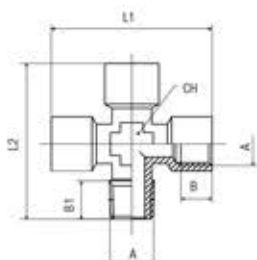


### 6025

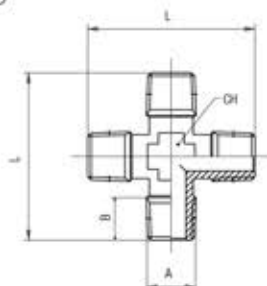
**RACCORDO A CROCE MASCHIO-FEMMINA**  
 MALE-FEMALE EQUAL CROSS  
 KREUZVERSCHRAUBUNG AUSSEN-/INNENGEW.  
 CROIX ÉGALE MÂLE/FEMELLE  
 RACOR A CRUZ MACHO-HEMBA  
 CONEXÃO CRUZETA MACHO-FÊMMEA



Code	A	B	B1	L1	L2	CH	Pack.
06025 00 01 02 NB	1/8	8.5	8	39	37	11	10
06025 00 01 03 NB	1/4	11	11	50	48.5	13	10
06025 00 01 04 NB	3/8	12	11.5	56	54	17	10
06025 00 01 05 NB	1/2	15	14	64	61	20	10

### 6030

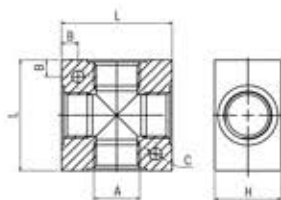
**RACCORDO A CROCE MASCHIO**  
 MALE EQUAL CROSS  
 KREUZVERSCHRAUBUNG AUSSENGEW.  
 CROIX ÉGALE MÂLE  
 RACOR A CRUZ MACHO  
 CONEXÃO CRUZETA COM ROSCA MACHO



Code	A	B	L	CH	Pack.
06030 00 01 02 NB	1/8	8	35	11	10
06030 00 01 03 NB	1/4	11	47	13	10
06030 00 01 04 NB	3/8	11.5	52	17	10
06030 00 01 05 NB	1/2	14	58	20	10

### 6040

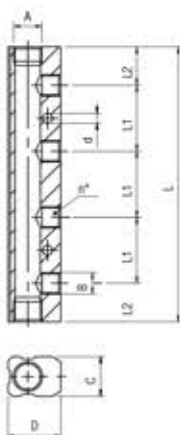
**RACCORDO A CROCE IN ALLUMINIO**  
 ALUMINIUM TEE CROSS  
 KREUZVERTEILER AUS ALUMINIUM  
 CROIX DE DISTRIBUTION EN ALUMINIUM  
 RACOR A CRUZ EN ALUMINIO  
 CONEXÃO CRUZETA EM ALUMÍNIO



Code	A	L	H	B	C	Pack.
06040 00 11 02 AG	1/8	25	15	4.3	4.5	10
06040 00 11 03 AG	1/4	40	20	6.5	5.5	10
06040 00 11 04 AG	3/8	50	25	7.5	5.5	5
06040 00 11 05 AG	1/2	50	30	7.5	5.5	5

### 6047

**RIPARTITORE IN ALLUMINIO**  
 ALUMINIUM DISTRIBUTION MANIFOLD  
 VERTEILERBLOCK AUS ALUMINIUM  
 NOURRICE DE DISTRIBUTION EN ALUMINIUM  
 REGLETA SIMPLE EN ALUMINIO  
 DISTRIBUIDOR EM ALUMÍNIO

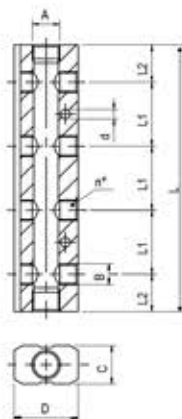


Code	A	B	n°	C	D	L1	L2	L	d	Pack.
06047 00 11 AJ AG	1/4	1/8	2	18	24	30	17.5	65	4.5	5
06047 00 11 AK AG	1/4	1/8	3	18	24	30	17.5	95	4.5	5
06047 00 11 AW AG	1/4	1/8	4	18	24	30	17.5	125	4.5	5
06047 00 11 BA AG	1/4	1/8	5	18	24	30	17.5	155	4.5	5
06047 00 11 BB AG	1/4	1/8	6	18	24	30	17.5	185	4.5	5
06047 00 11 BC AG	3/8	1/4	2	22	30	36	20	76	5.5	5
06047 00 11 BD AG	3/8	1/4	3	22	30	36	20	112	5.5	5
06047 00 11 BE AG	3/8	1/4	4	22	30	36	20	148	5.5	5
06047 00 11 BF AG	3/8	1/4	5	22	30	36	20	184	5.5	5
06047 00 11 BG AG	3/8	1/4	6	22	30	36	20	220	5.5	5
06047 00 11 ES AG	1/2	3/8	2	26	35	40	25	90	5.5	5
06047 00 11 ET AG	1/2	3/8	3	26	35	40	25	130	5.5	5
06047 00 11 EU AG	1/2	3/8	4	26	35	40	25	170	5.5	5
06047 00 11 EV AG	1/2	3/8	5	26	35	40	25	210	5.5	5
06047 00 11 EZ AG	1/2	3/8	6	26	35	40	25	250	5.5	5

### 6048

**RIPARTITORE DOPPIO IN ALLUMINIO**

ALUMINIUM DOUBLE DISTRIBUTION MANIFOLD  
 DOPPELTER VERTEILERBLOCK AUS ALUMINIUM  
 NOURRICE DE DISTRIBUTION DOUBLE EN ALUMINIUM  
 REGLETA DOBLE EN ALUMINIO  
 DISTRIBUIDOR DUPLO EM ALUMÍNIO

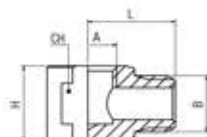


Code	A	B	n°	C	D	L1	L2	L	d	Pack.
06048 00 11 AJ AG	1/4	1/8	2	18	30	30	17.5	65	4.5	5
06048 00 11 AK AG	1/4	1/8	3	18	30	30	17.5	95	4.5	5
06048 00 11 AW AG	1/4	1/8	4	18	30	30	17.5	125	4.5	5
06048 00 11 BA AG	1/4	1/8	5	18	30	30	17.5	155	4.5	5
06048 00 11 BB AG	1/4	1/8	6	18	30	30	17.5	185	4.5	5
06048 00 11 BC AG	3/8	1/4	2	22	38	36	20	76	5.5	5
06048 00 11 BD AG	3/8	1/4	3	22	38	36	20	112	5.5	5
06048 00 11 BE AG	3/8	1/4	4	22	38	36	20	148	5.5	5
06048 00 11 BF AG	3/8	1/4	5	22	38	36	20	184	5.5	5
06048 00 11 BG AG	3/8	1/4	6	22	38	36	20	220	5.5	5
06048 00 11 ES AG	1/2	3/8	2	26	44	40	25	90	5.5	5
06048 00 11 ET AG	1/2	3/8	3	26	44	40	25	130	5.5	5
06048 00 11 EU AG	1/2	3/8	4	26	44	40	25	170	5.5	5
06048 00 11 EV AG	1/2	3/8	5	26	44	40	25	210	5.5	5
06048 00 11 EZ AG	1/2	3/8	6	26	44	40	25	250	5.5	5

### 6070

**RACCORDO A L MASCHIO-FEMMINA**

MALE-FEMALE ELBOW FITTING  
 WINKELVERSCHRAUBUNG AUSSEN-/INNENGEW.  
 RACCORD EQUERRE MÂLE/FEMELLE  
 RACOR A L MACHO-HEMBRA  
 CONEXÃO EM "L" MACHO-FÊMEA

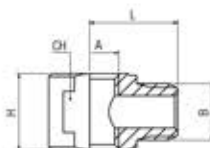


Code	A	B	H	L	CH	Pack.
06070 00 01 2W NB	1/8	1/8	13	15	13	10
06070 00 01 6W NB	1/4	1/4	18	19	18	10

### 6080

**RACCORDO A T MASCHIO-FEMMINA-FEMMINA**

MALE-FEMALE-FEMALE TEE FITTING  
 T-VERSCHRAUBUNG AUSSEN-/INNEN-/INNENGEW.  
 RACCORD TÊ MÂLE / FEMELLE  
 RACOR A T MACHO-HEMBRA-HEMBRA  
 CONEXÃO EM "T" MACHO-FÊMEA

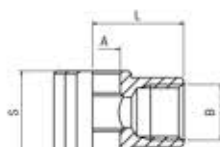


Code	A	B	H	L	CH	Pack.
06080 00 01 2W NT	1/8	1/8	13	15	13	10
06080 00 01 6W NT	1/4	1/4	18	18.5	18	10

### 6090

**ANELLO ORIENTABILE A L FEMMINA**

FEMALE SINGLE BANJO BODY  
 RINGANSCHLUSS INNENGEW.  
 CORPS BANJO FEMELLE  
 ANILLO ORIENTABLE HEMBRA  
 ANEL ORIENTÁVEL EM "L" COM ROSCA FÊMEA



Code	B	A	L	S	Pack.
06090 00 01 02 NB	1/8	10	16.5	15	10
06090 00 01 03 NB	1/4	13	22	17	10
06090 00 01 04 NB	3/8	16.7	26	20	10